



The miracles of science™

ONE STEP CLOSER TO A STRONGER CROP.

DuPont™
Exirel™
insecticide
powered by
CYAZYPYR™

DuPont™ Exirel™ insecticide, powered by Cyazypyr™, is an innovative insecticide to help protect your high-value stone fruits from a cross-spectrum of chewing and sucking pests.

Designed for powerful foliar protection:

Exirel™ is rapidly absorbed into foliage for fast acting protection from a cross-spectrum of pests including cherry fruit fly, aphids, oblique-banded leafroller, plum curculio and spotted wing drosophila in stone fruit.

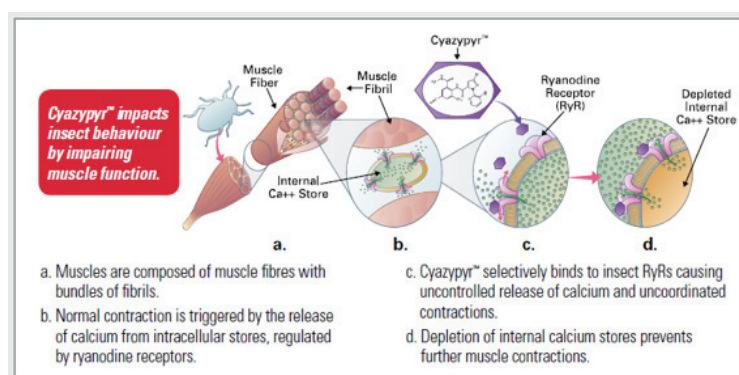
- Locally systemic for rainfastness and residual control
- Translaminar movement for excellent leaf coverage and protection
- Excellent crop safety
- 3 day pre-harvest interval and 12 hour re-entry period
- Convenient single-active formulation

Highly effective IPM product:

- Conserves beneficial arthropods to help in pest control
- New mode-of-action for spotted wing drosophila and sucking insects
- Favourable Eco-tox and E-fate profile; providing low impact on the environment

Optimized formulation:

- Suspo-emulsion formulation: 100 g/L (Suspo-emulsion is a formulation containing both solid and liquid active ingredients dispersed in an aqueous phase).



Cyazypyr™, the active ingredient in Exirel™ is the second active ingredient in the anthranilic diamide class and the first product to control a cross-spectrum of chewing and sucking pests.

Cyazypyr™ works quickly to stop pests from feeding on the crop, protecting it from damage and transmission of some diseases. Cyazypyr™ activates insect ryanodine receptors (RyRs) which play a critical role in muscle function. Muscle contractions require the release of calcium from intercellular stores into the cell cytoplasm. RyRs are integral in regulating the release of calcium. Cyazypyr™ molecules bind to the RyRs, causing uncontrolled release and depletion of internal calcium, preventing further muscle contraction and pest paralysis to stop feeding quickly.

Crops: Stone fruit, pome fruit, corm and tuberous vegetables, bulb vegetables, leafy vegetables, cucurbit vegetables, brassica vegetables, fruiting vegetables, bush berries, tree nuts, root vegetables (except sugar beet), legume vegetables and low growing berries (except strawberry)

Chemical Group: Group 28, anthranilic diamide.

Packaging: One (1) 3.79 L jug.

Re-entry Period: Twelve (12) hours

Application Information: Stone fruit (Apricot; Cherry, black; Cherry, Nanking; Cherry, sweet; Cherry, tart; Chokecherry, Nectarine; Pelch; Plum; Plum, American; Plum, beach; Plum, Canada; Plum, cherry; Plum, Chickasaw; Plum, Damson; Plum, Japanese; Plum, Klamath; Plum, prune; Plumcot; Sloe; Cultivars, varieties and/or hybrids of these).

| Pest | Rate | Re-Application Interval | Application Information |
|--|--|-------------------------|---|
| Oriental fruit moth | 202 to 304 mL/ac (500 to 750 mL/ha) | 7 to 10 days | <ul style="list-style-type: none"> • Begin applications when treatment thresholds have been reached. Thorough coverage is essential for optimum control. • Oriental fruit moth: <ul style="list-style-type: none"> - Targeted generation – apply at 1st egg hatch - Re-apply 7-10 days later if required • Oblique-banded leafroller: <ul style="list-style-type: none"> - Spring/overwintering/1st summer generation – apply when over-wintering larvae become active, from pink stage thorough petal fall - Summer generations – Monitor adult moth flight; apply at 1st egg hatch (170 – 240 degree days Celsius) - A re-application 10 days later may be required to control extended emergence of small larvae • Peach twig borer: <ul style="list-style-type: none"> - Spring/overwintering/1st summer generation – apply within 7 days of first trap catch of adult male moths - Summer generation – monitor for 2nd brood moths until mid-August. Apply 2nd spray within 7 days of first trap catch of adult male moths • Japanese beetle: <ul style="list-style-type: none"> - Monitor adult populations and follow provincial guidelines for pest treatment thresholds • Plum curculio: <ul style="list-style-type: none"> - Bloom – monitor trees along edge of the orchard for signs of feeding damage. Repeat 10-14 days if needed. • Spotted wing drosophila: <ul style="list-style-type: none"> - Apply when populations are low. - Exirel™ targets adult life stages. If populations are high, use a registered insecticide with a different mode of action to reduce pest populations. Apply a subsequent application of Exirel™ if required |
| Oblique-banded leafroller Three-lined leafroller Fruit tree leafroller European leafroller Eyespotted bud moth | 202 to 405 mL/ac (500 to 1000 mL/ha) | | |
| Green peach aphid Plum aphid Cherry fruit fly Western cherry fruit fly | 304 to 607 mL/ac (750 to 1500 mL/ha) | | |
| Plum curculio Japanese beetle | 405 to 607 mL/ac (1000 to 1500 mL/ha) | | |
| Peach twig borer | 304 to 405 mL/ac (750 to 1000 mL/ha) | | |
| Spotted wing drosophila | 405 to 607 mL/ac (1000 to 1500 mL/ha) | | |

Questions?

For more information, please contact your local DuPont rep, call the DuPont™ FarmCare® Support Centre at 1-800-667-3925 or visit Exirel.dupont.ca



The miracles of science™

As with all crop protection products, read and follow label instructions carefully. All information effective January 2016.

Member of CropLife Canada.

Unless indicated, trademarks with ®, ™ or sm are trademarks of DuPont or affiliates. © 2016 DuPont.