



Delegate[™]

INSECTICIDE

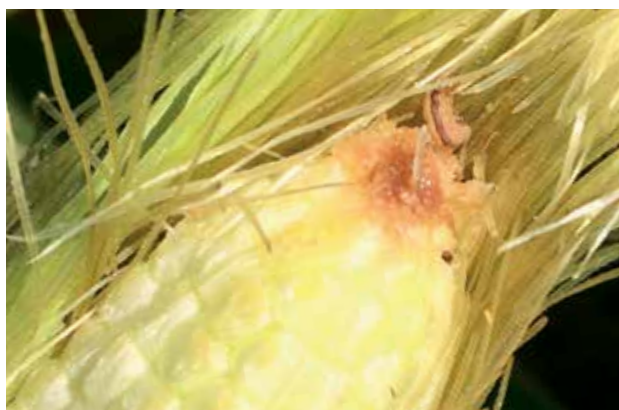
Delegate[™] offers quick knockdown and residual control of western bean cutworm and European corn borer in corn with a novel Group 5 mode of action.

DELEGATE OFFERS

- Fast and effective control of western bean cutworm and European corn borer by either contact or ingestion
- Important rotation/IPM tool because of its unique mode of action
- Low use rates
- Translaminar activity provides
 - Extra protection against insects that feed from the underside of leaves
 - Long-lasting residual control
 - Resistance to wash-off by rain

WESTERN BEAN CUTWORM CROP IMPACT

In corn, young western bean cutworm larvae feed on the tassels and silks until they are large enough to tunnel into the ear and feed extensively on the kernels, causing yield damage and grain quality concerns.



Delegate is classified as a Class 3 pesticide by OPAC. Aerial applications do not require a permit*.

DELEGATE'S UNIQUE MODE OF ACTION

Spinetoram, the active ingredient in Delegate, is the only Group 5 insecticide registered for western bean cutworm control in corn. No other class of products affects the insect's nervous system with the same mode of action as Spinetoram.

IPM COMPATIBLE

Delegate has a favourable environmental and toxicological profile and has minimal effects on beneficials. Industry field trials have shown that Delegate has a low impact on beneficial populations of key arthropod natural enemies, such as ladybugs.

Resistance management

Delegate should be used as part of an overall Insect Resistance Management (IRM) strategy which includes monitoring, scouting and thresholds.

Alternating different insecticide groups is a preferred approach to IRM. Delegate's unique Group 5 chemistry provides an ideal rotational Mode of Action (MOA) for managing western bean cutworm.



TANK MIXING

Delegate can be tank mixed with a fungicide, like Acapela®, provided:

- The tank mix partner is registered on the crop
- The application timing of all tank mix partners are compatible with crop and pest staging
- The most restrictive label directions of the tank mix are followed

OPTIMIZING PERFORMANCE

- Rainfast when spray solution has dried on the vegetation (two hours).
- A spray solution pH between 5 and 9 is preferred for optimal performance.
- Ground application: Use spray equipment capable of thorough coverage of the crop, ensuring uniform coverage of the target pest.
- Aerial application: Apply in a solution of at least 30 litres per hectare*

PRECAUTIONS

Delegate residues that have dried on the vegetation are non-toxic to bees. Do not spray when bees are active in the area.

Active ingredient: Spinetoram

Chemical group: Group 5

Formulation: Wettable granule

Packaging: 6 × 840 g bottles

Application: Aerial* and ground application

Re-entry period: 12 hours

Pre-harvest interval:

Field and pop corn: 28 days

Seed and sweet corn: 1 day

Rates: 50 to 85 g/ac (120 to 210 g/ha)

Guidelines: Ensure sufficient water volume for complete coverage of the plant foliage.

Applications should be timed at egg hatch or to small larvae. Use the higher rate for heavy infestations, large larvae or longer residual control.

Repeat applications based on monitoring of insect populations. Apply a maximum of three applications per year with a minimum of five days between applications.

Accomplish more. On the same acres. With Dow AgroSciences.
Call the Solutions Center at 1.800.667.3852 or visit www.dowagro.ca

*Aerial application is currently being assessed for registration under the Pest Control Products Act and have not been approved. Always read and follow the current approved label when using this product.

IMPORTANT: This information is provided for reference only and does not supply sufficient information for application. Always read and follow label directions.